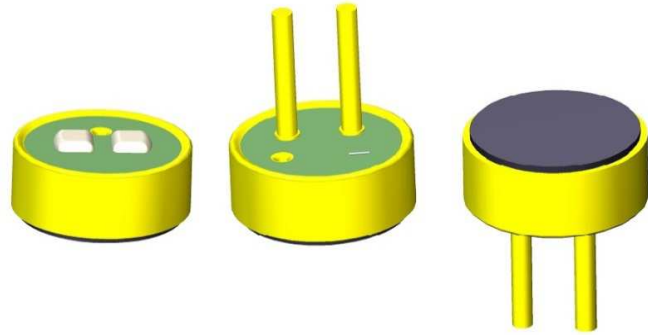


页码	尺寸规格(mm)	基本型号	指向性		连接方式			标准测试条件	灵敏度(dB)	内置电容
			全指向	单指向	SMD	Soldering Type	Pin Type			
1	φ4.0×1.5	TSB-4015B2TUP /ATU		◎		◎	◎	2.0V,2.2KΩ	-33 ~ -47	3Cap.
2	φ6.0×2.7	TSB-6027AU/TSB-62B1UP		◎		◎	◎	2.0V,2.2KΩ	-37 ~ -47	3Cap.
3	φ6.0×3.4	TSB-6027A5N		◎		◎		2.0V,2.2KΩ	-42 ~ 48	2Cap.
4	φ8.0×5.2	TSB-8050AU		◎		◎		1.5V,2.2KΩ	-44 ~ -53	2Cap.
5	φ9.7×5.0	TSB-9750A22U/A13U		◎		◎		1.5V, 680Ω	-41 ~ -53	2Cap.
6	φ9.7×5.0	TSB-9750BUP		◎			◎	1.5V, 680Ω	-44 ~ -53	2Cap.
7	φ9.9×5.0	TSB-9950A11U		◎		◎		1.5V,2.2KΩ	-32 ~ -50	3Cap.
8	φ12×14.3	TSB-120A29		◎		◎		1.5V,2.2KΩ	-43 ~ -49	/
9	φ13.7×6.2	TSB-140A72U		◎		◎		3.0V	-27 ~ -44	1Cap.
10	φ14.0×6.5	TSB-140A62U		◎		◎		1.5V,2.2KΩ	-34 ~ -40	/
11	φ16.1×6.2	TSB-160A		◎		◎		1.5V,2.2KΩ	-43 ~ -49	/
12	φ16×6.9	TSB-160A11UC680		◎		◎		1.5V,2.2KΩ	-42 ~ -48	2Cap.
13	φ25.0×6.2	TSB-25A		◎		◎		1.5V,2.2KΩ	-39 ~ -45	/
14	φ26.0×7.0	TSB-2555B		◎		◎		1.5V,2.2KΩ	-39 ~ -45	/
15	φ24.8×9.0	TSB-2590A2UC680		◎		◎		1.5V,2.2KΩ	-41 ~ -47	2Cap.
16	φ34.0×12.0	TSB-3412AU		◎		◎		1.5V,2.2KΩ	-41 ~ -47	/

TSB-4015B2TUP/ATU

Unidirectional Back Electret Condenser Microphone

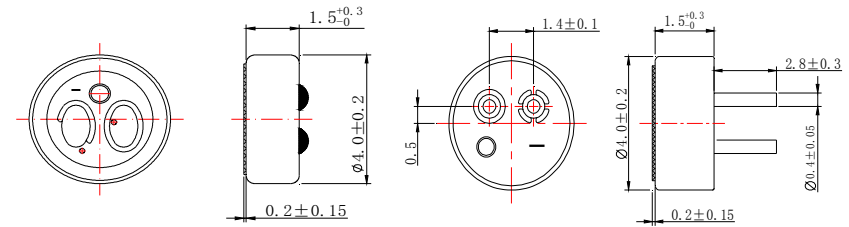
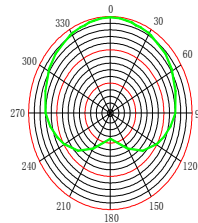
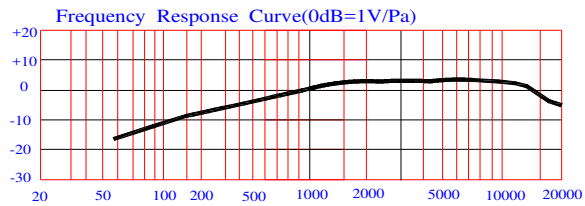


Sensitivity(1KHZ,0dB=1v/Pa)

- Y:-44 ± 3dB
- Z:-42 ± 3dB
- W:-40 ± 3dB
- V:-38 ± 3dB
- G:-36 ± 3dB

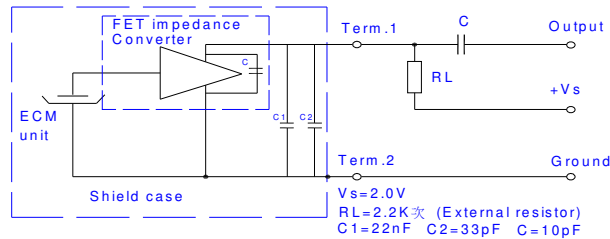
Frequency Response Curve

Dimensional(mm)



Schematic Diagram(Vs=2.0V,RL=2.2k Ω)

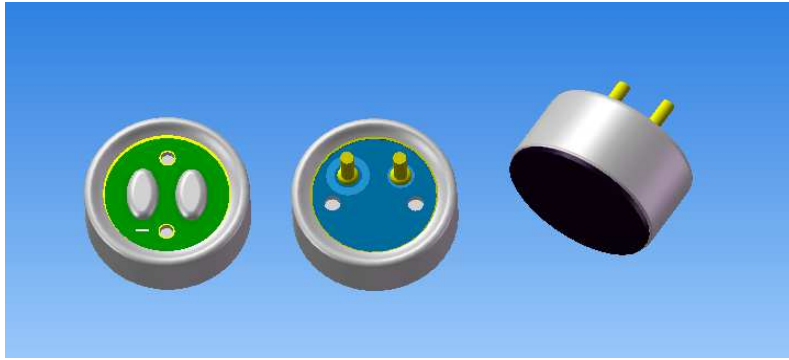
Specifications



- | | |
|-----------------------------|--------------------|
| Sensitivity: | See above |
| Standard operation voltage: | 2V |
| Impedance: | ≤ 2.2KΩ |
| Directivity: | Unidirectional |
| Current reduction: | Max. 0.5mA |
| Sensitivity reduction: | ≤ 3dB Vs=2.0to1.5V |
| S/N ratio: | ≥ 56dB |
| Maximum input sound level: | 110dB SPL |

TSB-6027AU/TSB-62B1UP

Unidirectional Back Electret Condenser Microphone

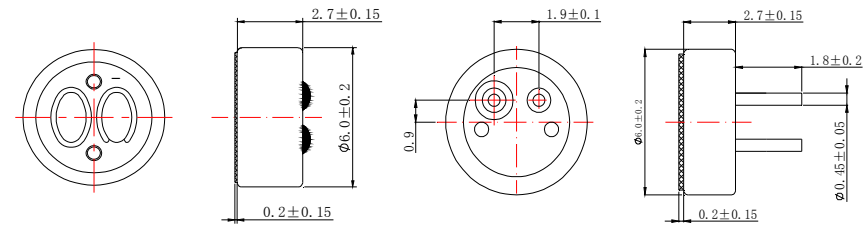
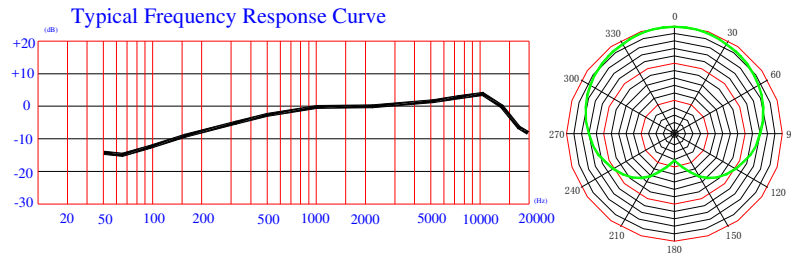


Sensitivity(1KHZ,0dB=1v/Pa)

Y: -44 ± 3 dB
 Z: -42 ± 3 dB
 W: -40 ± 3 dB

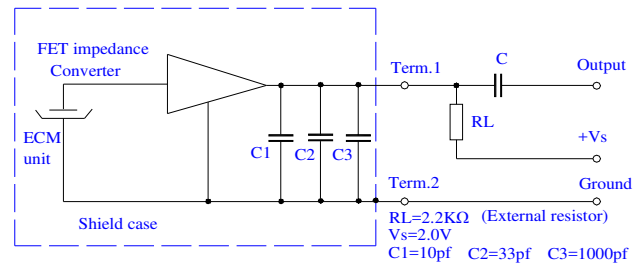
Frequency Response Curve

Dimensional(mm)



Schematic Diagram($V_s=2.0, R_L=2.2k \Omega$)

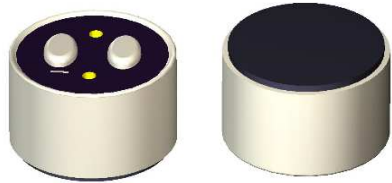
Specifications



Sensitivity:	See above
Standard operation voltage:	2V
Impedance:	$\leq 2.2K\Omega$
Directivity:	Unidirectional
Current reduction:	Max. 0.5mA
Sensitivity reduction:	≤ 3 dB $V_s=2.0$ to $1.5V$
S/N ratio:	≥ 56 dB
Maximum input sound level:	110dB SPL

TSB-6027A5N

Noise Cancelling Back Electret Condenser Microphone

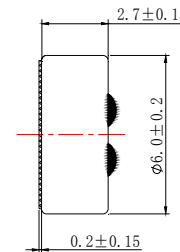
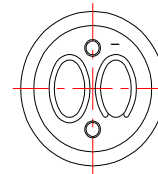
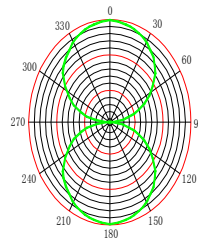
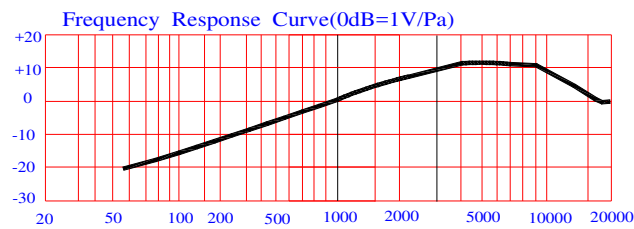


Sensitivity(1KHZ,0dB=1v/Pa)

L:-45 ± 3dB

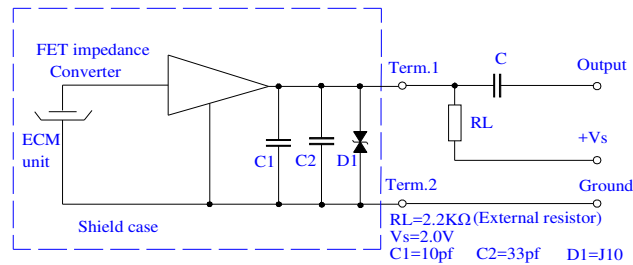
Frequency Response Curve

Dimensional(mm)



Schematic Diagram(Vs=2.0,RL=2.2k Ω)

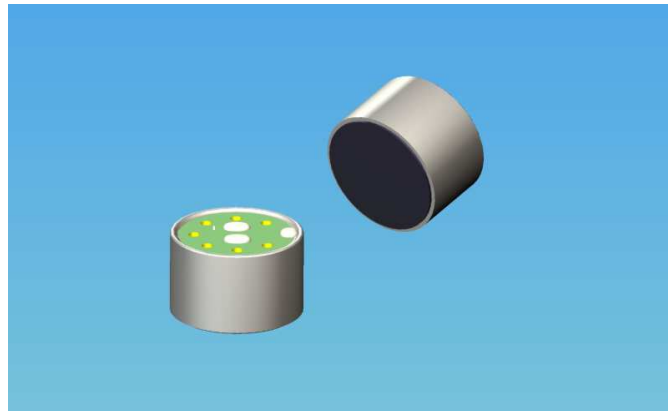
Specifications



Sensitivity:	See above
Standard operation voltage:	2V
Impedance:	≤ 2.2KΩ
Directivity:	Noise Cancelling
Current reduction:	Max. 0.35mA
Sensitivity reduction:	≤ 3dB Vs=2.0to1.5V
S/N ratio:	≥ 58dB
Maximum input sound level:	110dB SPL

TSB-8050AU

Unidirectional Back Electret Condenser Microphone



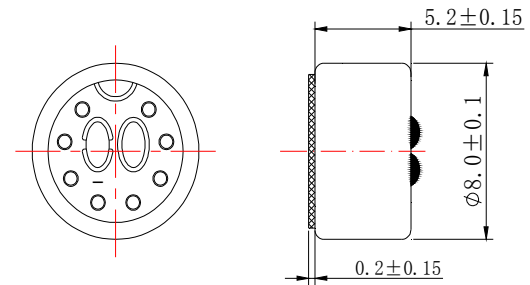
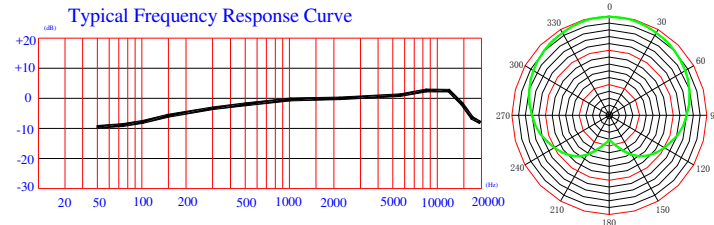
Sensitivity(1KHZ,0dB=1v/Pa)

O: -50 ± 3 dB

M: -47 ± 3 dB

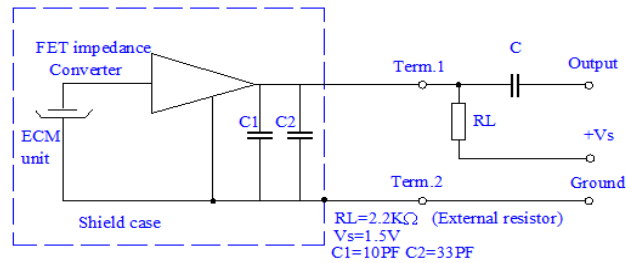
Frequency Response Curve

Dimensional(mm)



Schematic Diagram(Vs=1.5V,RL=2.2k Ω)

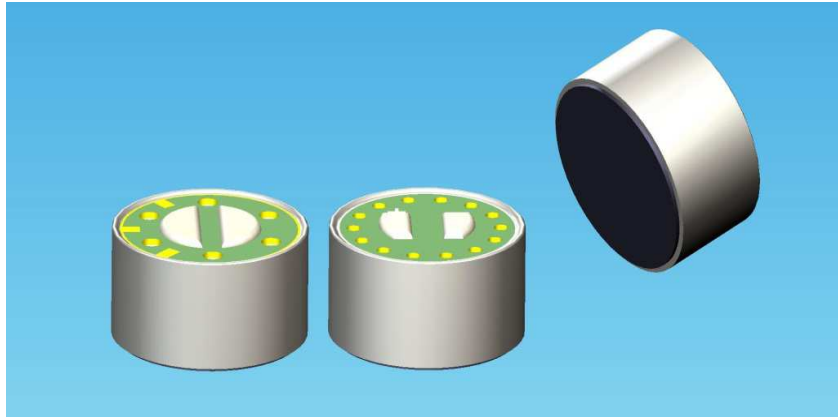
Specifications



Sensitivity:	See above
Standard operation voltage:	1.5V
Impedance:	$\leq 2.2K\Omega$
Directivity:	Unidirectional
Current reduction:	Max. 0.5mA
Sensitivity reduction:	≤ 3 dB Vs=1.5to1.0V
S/N ratio:	≥ 60 dB
Maximum input sound level:	110dB SPL

TSB-9750A22U/TSB-9750A13U

Unidirectional Back Electret Condenser Microphone

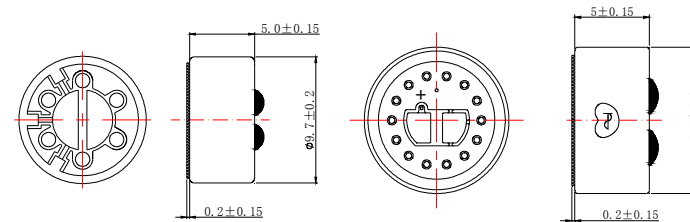
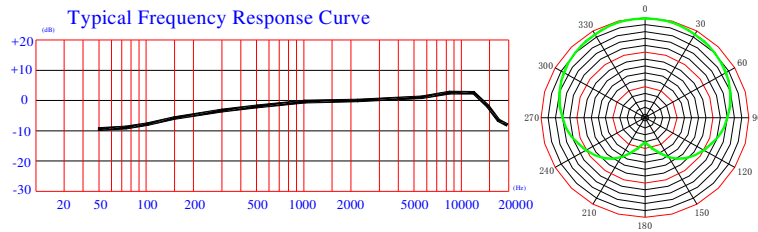


Sensitivity(1KHZ,0dB=1v/Pa)

O:-50 ± 3dB
 M:-47 ± 3dB
 Y:-44 ± 3dB

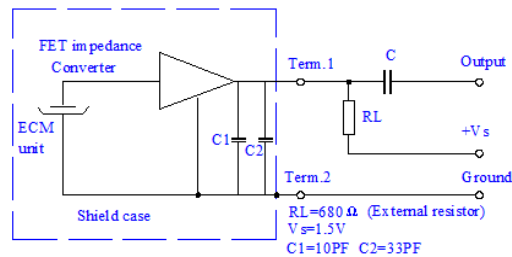
Frequency Response Curve

Dimensional(mm)



Schematic Diagram(Vs=1.5V,RL=680 Ω)

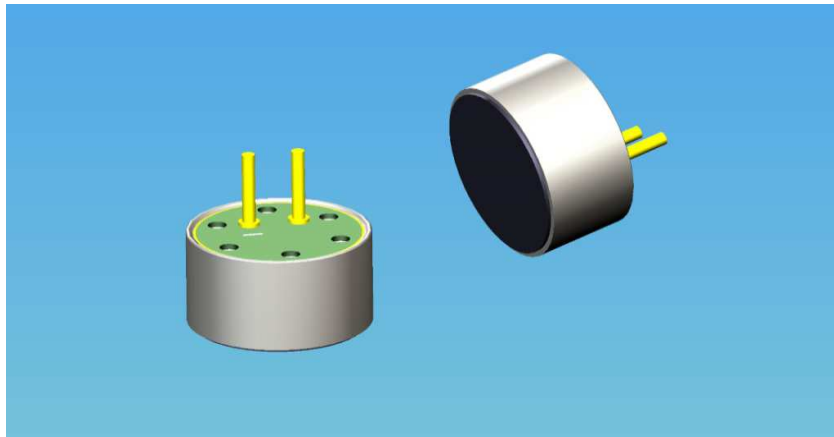
Specifications



Sensitivity:	See above
Standard operation voltage:	1.5V
Impedance:	$\leq 680\Omega$
Directivity:	Unidirectional
Current reduction:	Max. 0.5mA
Sensitivity reduction:	$\leq 3\text{dB}$ Vs=1.5to1.0V
S/N ratio:	$\geq 58\text{dB}$
Maximum input sound level:	110dB SPL

TSB-9750BUP

Unidirectional Back Electret Condenser Microphone



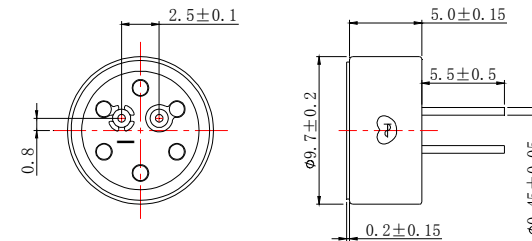
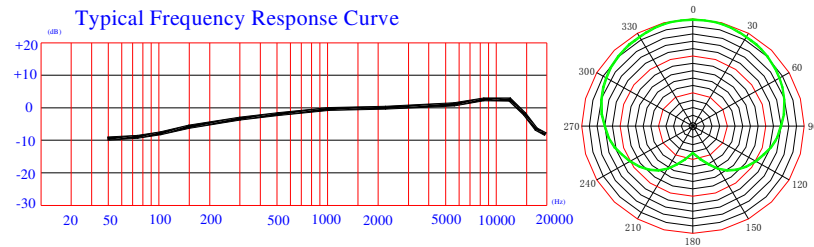
Sensitivity(1KHZ,0dB=1v/Pa)

O: -50 ± 3 dB

M: -47 ± 3 dB

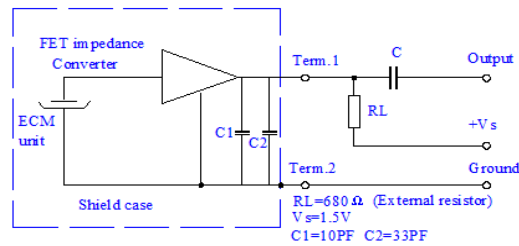
Frequency Response Curve

Dimensional(mm)



Schematic Diagram(Vs=1.5V,RL=680 Ω)

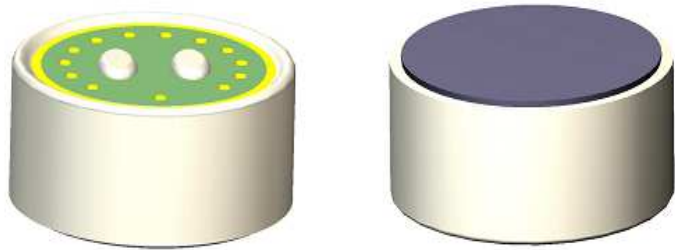
Specifications



Sensitivity:	See above
Standard operation voltage:	1.5V
Impedance:	$\leq 680 \Omega$
Directivity:	Unidirectional
Current reduction:	Max. 0.5mA
Sensitivity reduction:	$\leq 3dB$ Vs=1.5to1.0V
S/N ratio:	$\geq 58dB$
Maximum input sound level:	110dB SPL

TSB-9950A11U

Unidirectional Back Electret Condenser Microphone

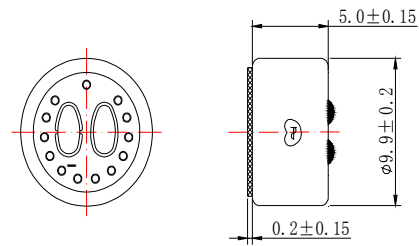
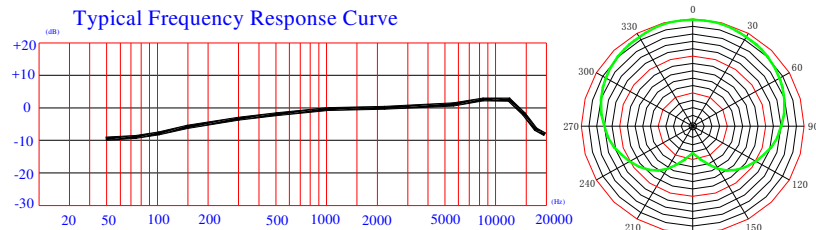


Sensitivity(1KHZ,0dB=1v/Pa)

- M:-47 ± 3dB
- Y:-44 ± 3dB
- J:-41 ± 3dB
- V:-38 ± 3dB
- F:-35 ± 3dB

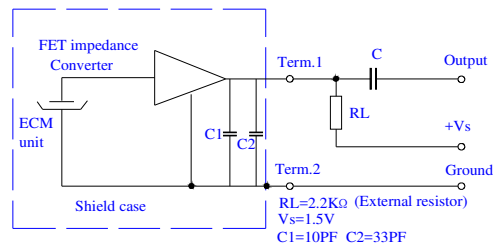
Frequency Response Curve

Dimensional(mm)



Schematic Diagram(Vs=1.5V,RL=2.2k Ω)

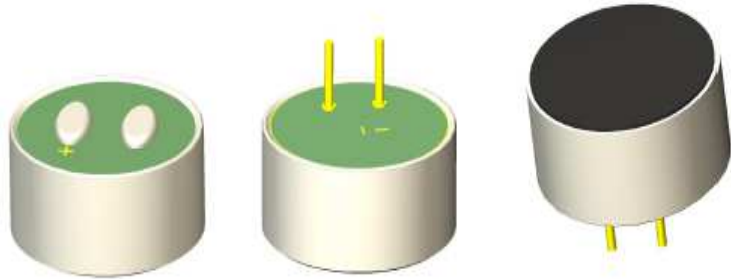
Specifications



Sensitivity:	See above
Standard operation voltage:	1.5V
Impedance:	≤ 2.2KΩ
Directivity:	Unidirectional
Current reduction:	Max. 0.5mA
Sensitivity reduction:	≤ 3dB Vs=1.5to1.0V
S/N ratio:	≥ 65dB
Maximum input sound level:	110dB SPL

TSB-120A29

Unidirectional Back Electret Condenser Microphone

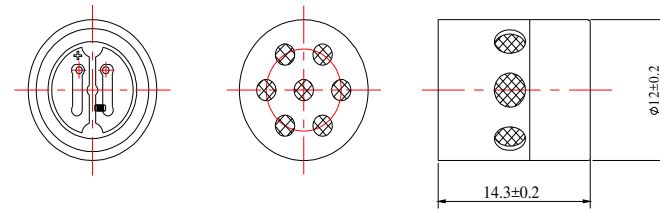
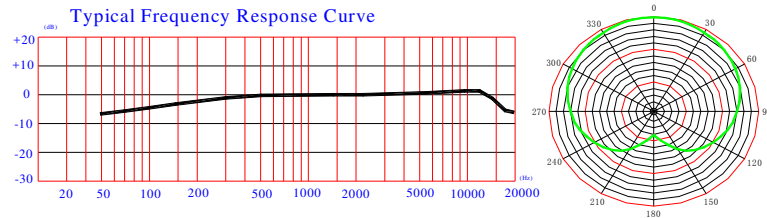


Sensitivity(1KHZ,0dB=1V/Pa)

X:-46 ± 3dB

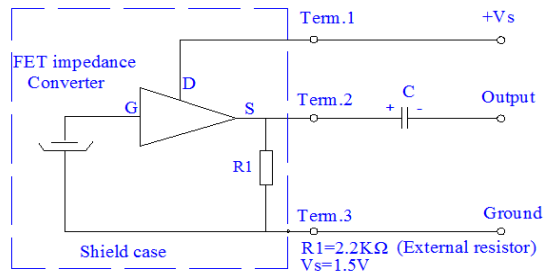
Frequency Response Curve

Dimensional(mm)



Schematic Diagram(Vs=1.5,RL=2.2k Ω)

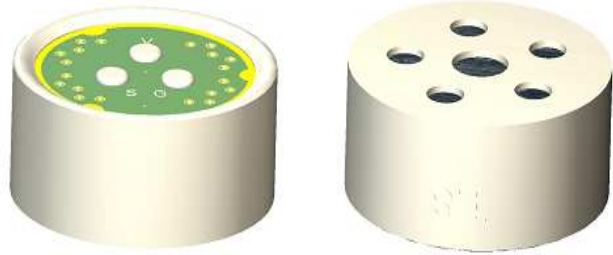
Specifications



Sensitivity:	See above
Standard operation voltage:	1.5V
Impedance:	≤2.2KΩ
Directivity:	Unidirectional
Current reduction:	Max. 0.5mA
Sensitivity reduction:	≤ 3dB Vs=1.5to1.0V
S/N ratio:	≥60dB
Maximum input sound level:	120dB SPL

TSB-140A72U

Unidirectional Back Electret Condenser Microphone

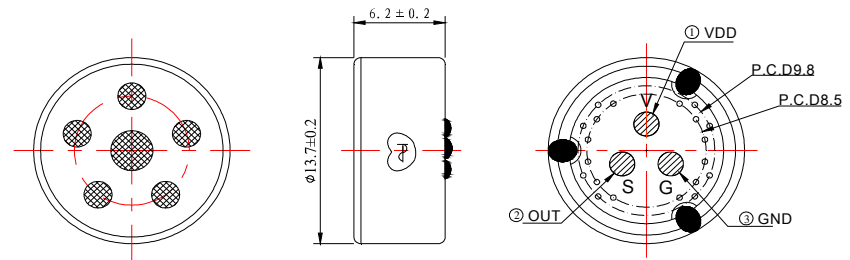
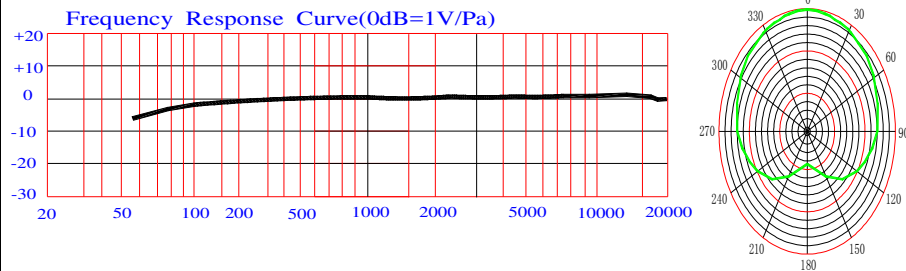


Sensitivity(1KHZ,0dB=1V/Pa)

- J: $-41 \pm 3\text{dB}$
- F: $-35 \pm 3\text{dB}$
- A: $-30 \pm 3\text{dB}$

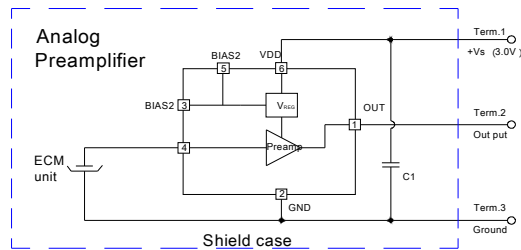
Frequency Response Curve

Dimensional(mm)



Schematic Diagram(Vs=3.0V)

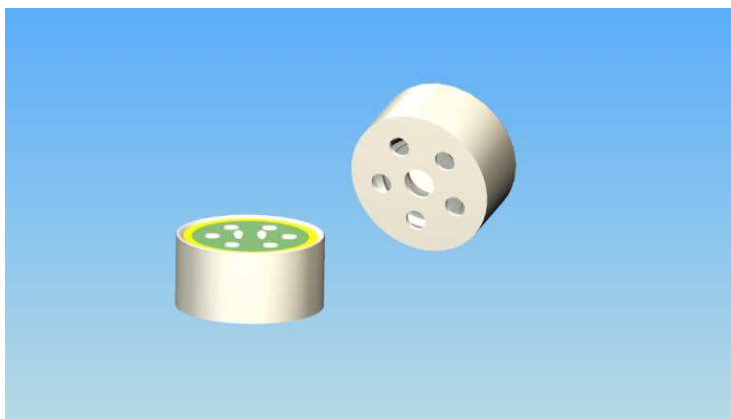
Specifications



Sensitivity:	See above
Operation Voltage:	3.0V
Impedance:	$\leq 0.8\text{K}\Omega$
Directivity:	Unidirectional
Current consumption:	Max. 0.25mA
Sensitivity reduction:	$\leq 3\text{dB}$ Vs=3.0to1.6V
S/N ratio:	$\geq 72\text{dB}$
Maximum input sound level:	125dB SPL

TSB-140A62U

Unidirectional Back Electret Condenser Microphone

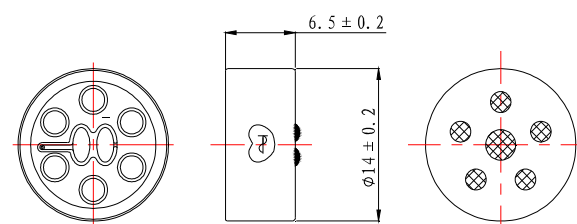
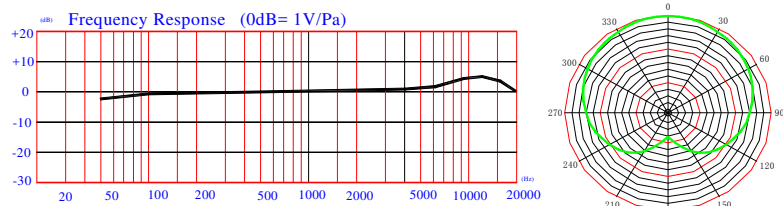


Sensitivity(1KHZ,0dB=1V/Pa)

H:-37 ± 3dB

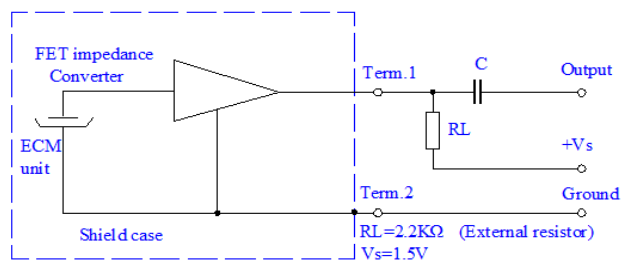
Frequency Response Curve

Dimensional(mm)



Schematic Diagram(Vs=1.5V 2.2KΩ)

Specifications



Sensitivity:	See above
Operation Voltage:	1.5V
Impedance:	≤ 2.2K Ω
Directivity:	Unidirectional
Current consumption:	Max. 0.5mA
Sensitivity reduction:	≤ 3dB Vs=1.5to1.0V
S/N ratio:	≥ 70dB
Maximum input sound level:	120dB SPL

TSB-160A

Unidirectional Back Electret Condenser Microphone

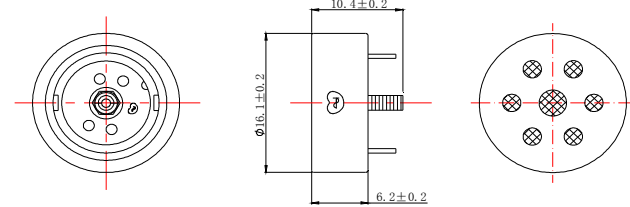
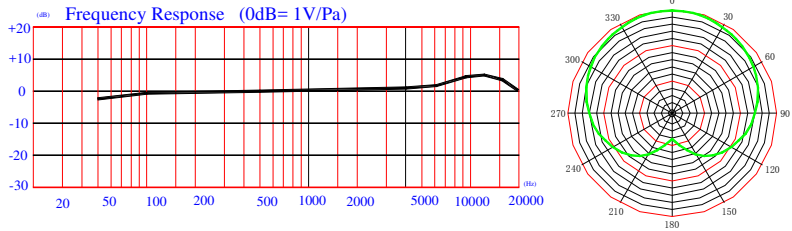


Sensitivity(1KHZ,0dB=1v/Pa)

X:-46 ± 3dB

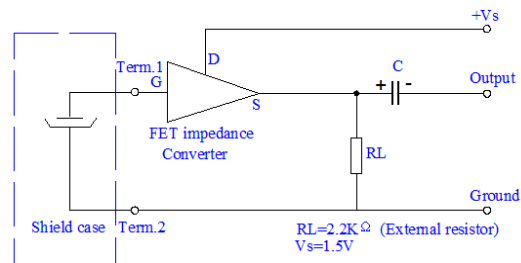
Frequency Response Curve

Dimensional(mm)



Schematic Diagram(Vs=1.5V 2.2KΩ)

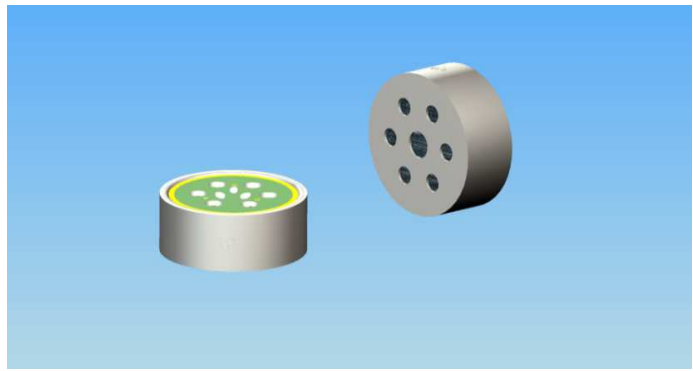
Specifications



Sensitivity:	See above
Operation Voltage:	1.5V
Impedance:	≤ 2.2K Ω
Directivity:	Unidirectional
Sensitivity reduction:	≤ 3dB Vs=1.5to1.0V
S/N ratio:	≥ 65dB
Maximum input sound level:	130dB SPL

TSB-160A11UC680

Unidirectional Back Electret Condenser Microphone

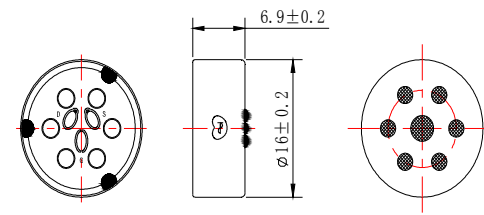
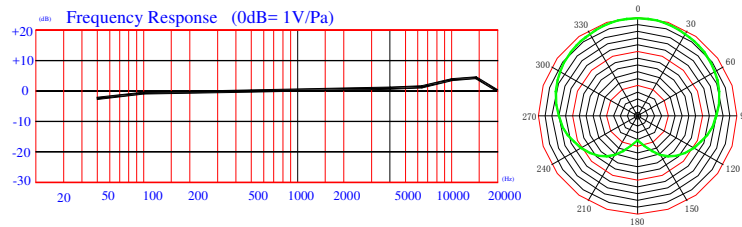


Sensitivity(1KHZ,0dB=1v/Pa)

L:-45 ± 3dB

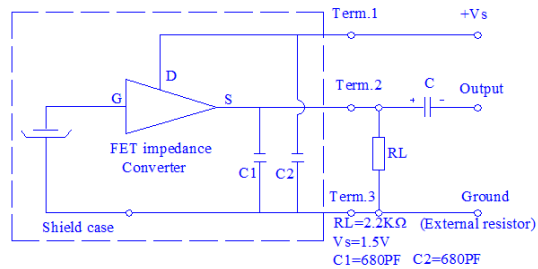
Frequency Response Curve

Dimensional(mm)



Schematic Diagram(Vs=1.5V 2.2KΩ)

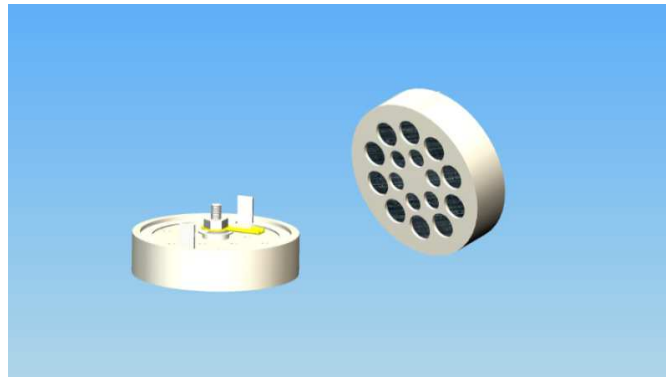
Specifications



Sensitivity:	See above
Operation Voltage:	1.5V
Impedance:	≤ 2.2K Ω
Directivity:	Unidirectional
Sensitivity reduction:	≤ 3dB Vs=1.5to1.0V
S/N ratio:	≥ 72dB
Maximum input sound level:	130dB SPL

TSB-25A

Unidirectional Back Electret Condenser Microphone

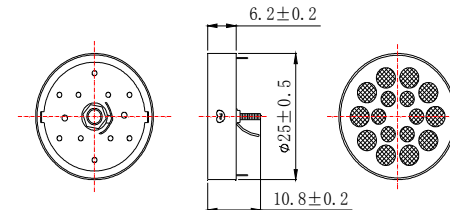
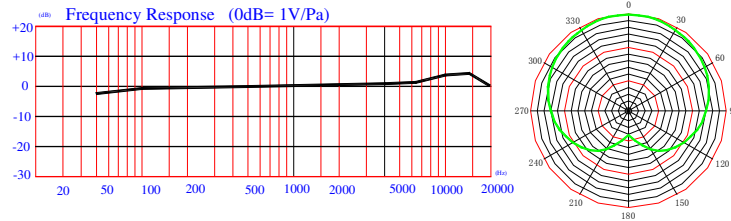


Sensitivity(1KHZ,0dB=1v/Pa)

Z:-42 ± 3dB

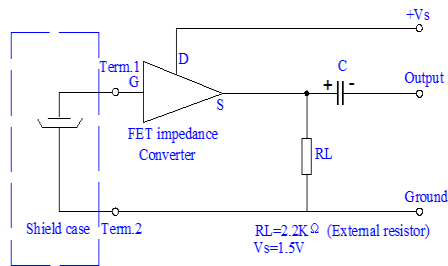
Frequency Response Curve

Dimensional(mm)



Schematic Diagram(Vs=1.5V 2.2KΩ)

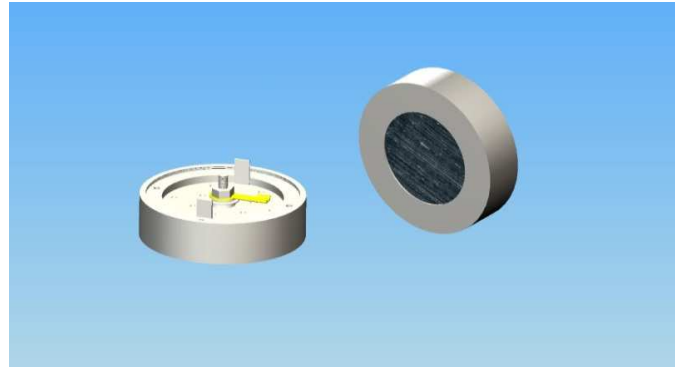
Specifications



Sensitivity:	See above
Operation Voltage:	1.5V
Impedance:	≤ 2.2K Ω
Directivity:	Unidirectional
Sensitivity reduction:	≤ 3dB Vs=1.5to1.0V
S/N ratio:	≥ 65dB
Maximum input sound level:	135dB SPL

TSB-2555B

Unidirectional Back Electret Condenser Microphone

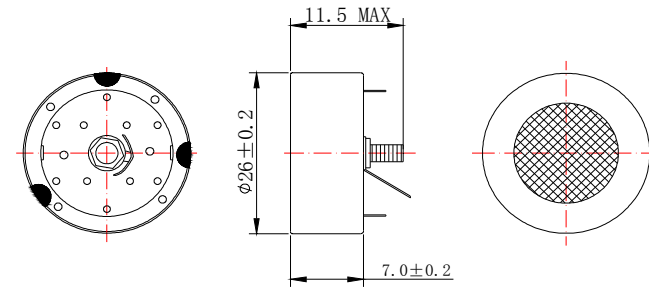
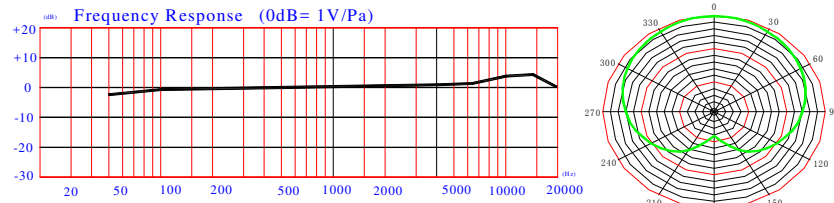


Sensitivity(1KHZ,0dB=1v/Pa)

Z:-42±3dB

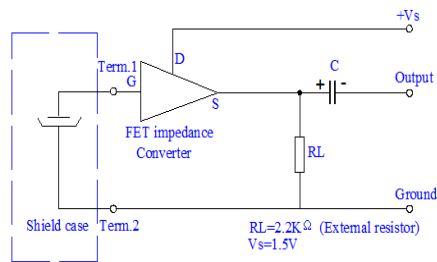
Frequency Response Curve

Dimensional(mm)



Schematic Diagram(Vs=1.5V 2.2KΩ)

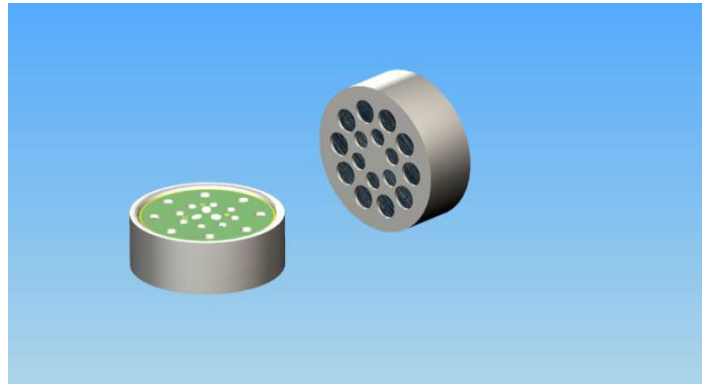
Specifications



Sensitivity:	See above
Operation Voltage:	1.5V
Impedance:	≤2.2KΩ
Directivity:	Unidirectional
Sensitivity reduction:	≤3dB Vs=1.5to1.0V
S/N ratio:	≥65dB
Maximum input sound level:	135dB SPL

TSB-2590A2UC680

Unidirectional Back Electret Condenser Microphone

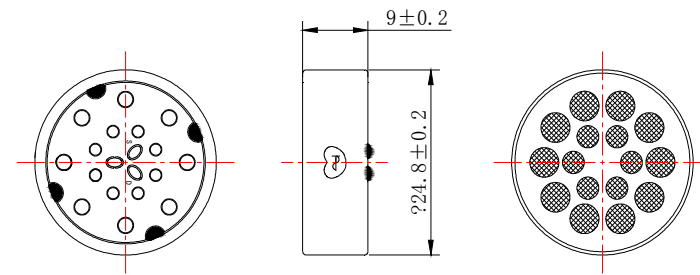
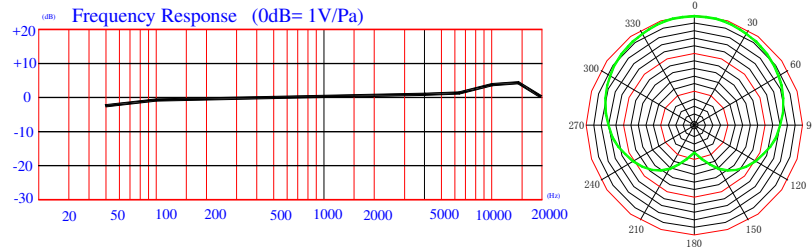


Sensitivity(1KHZ,0dB=1v/Pa)

Z:-44 ± 3dB

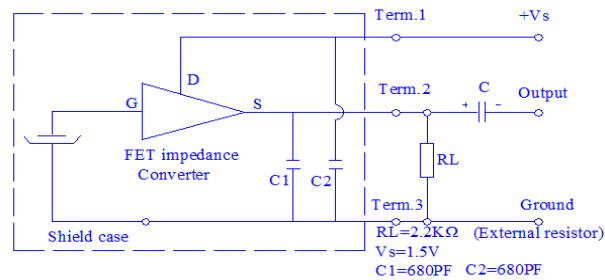
Frequency Response Curve

Dimensional(mm)



Schematic Diagram(Vs=1.5V 2.2KΩ)

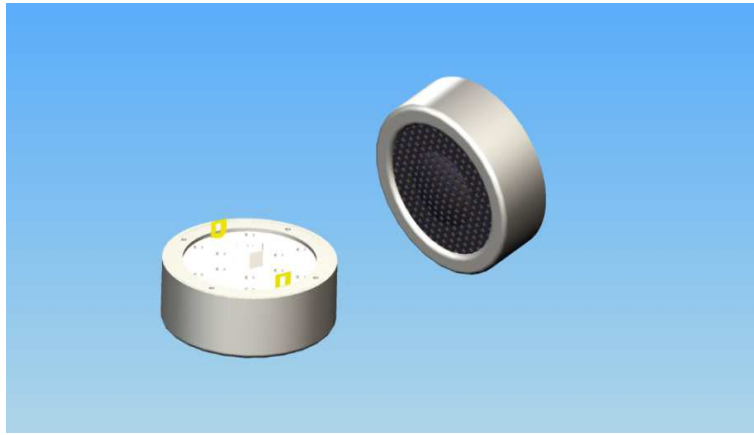
Specifications



Sensitivity:	See above
Operation Voltage:	1.5V
Impedance:	≤ 2.2K Ω
Directivity:	Unidirectional
Sensitivity reduction:	≤ 3dB Vs=1.5to1.0V
S/N ratio:	≥ 70dB
Maximum input sound level:	135dB SPL

TSB-3412AU

Unidirectional Back Electret Condenser Microphone

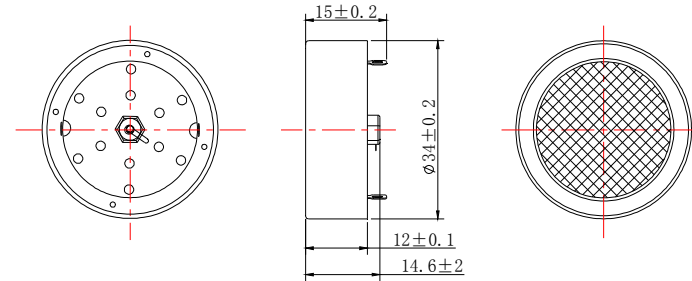
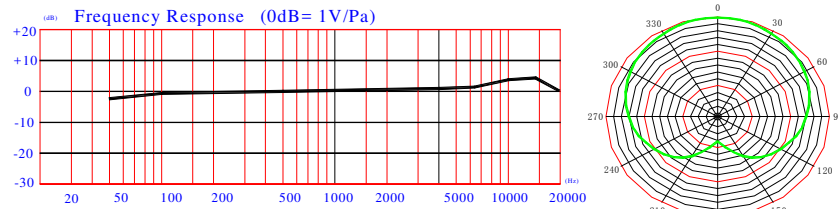


Sensitivity(1KHZ,0dB=1v/Pa)

Z:-44 ± 3dB

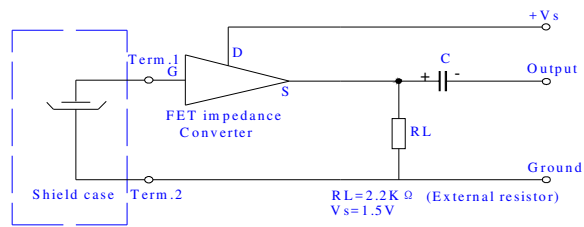
Frequency Response Curve

Dimensional(mm)



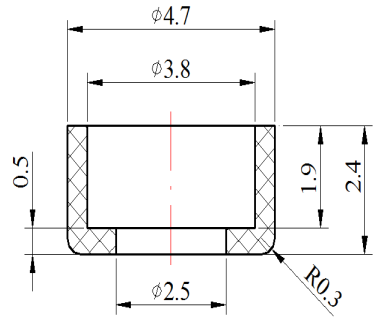
Schematic Diagram(Vs=1.5V 2.2KΩ)

Specifications

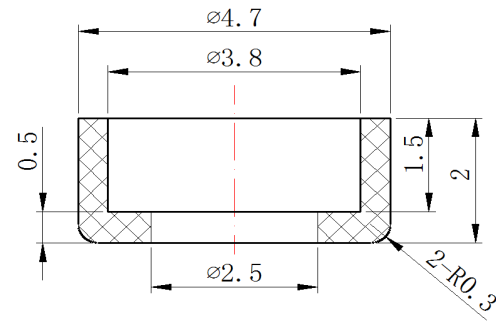


Sensitivity:	See above
Operation Voltage:	1.5V
Impedance:	$\leq 2.2K \Omega$
Directivity:	Unidirectional
Sensitivity reduction:	$\leq 3dB$ Vs=1.5to1.0V
S/N ratio:	$\geq 70dB$
Maximum input sound level:	135dB SPL

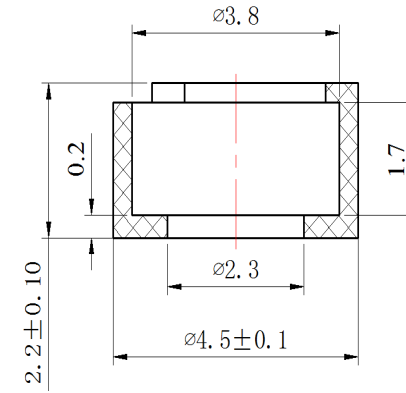
配套咪套



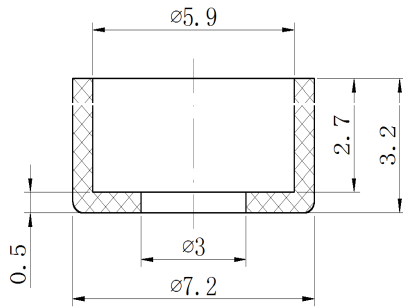
TS-MT-4015-KP01



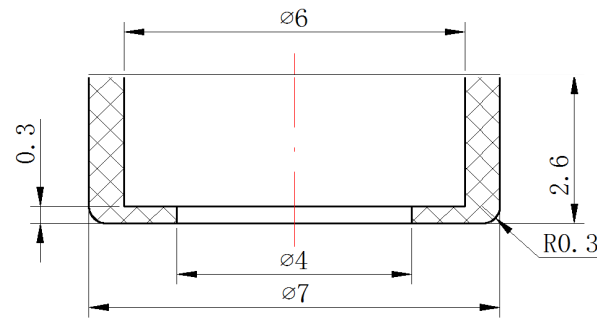
TS-MT-4013-P01



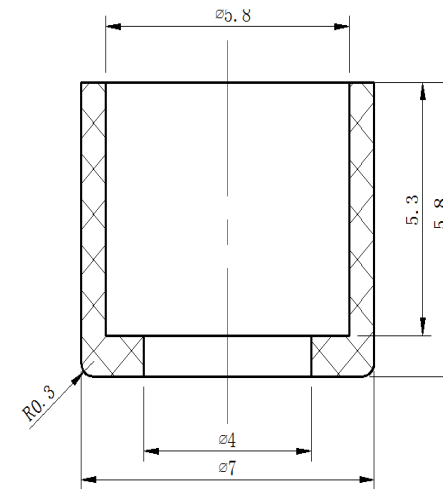
TS-MT-4015-KP06



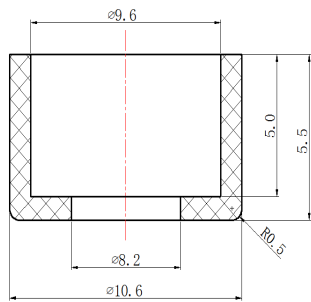
TS-MT-6027-P06



TS-MT-6022-P23



TS-MT-6050-P12



TS-MT-9750-P04